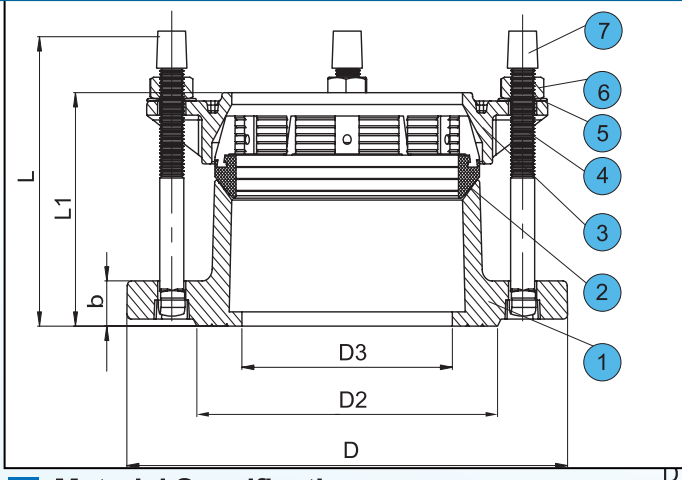


Restrained Flange Adaptor for HDPE & PVC Pipe



Material Specification:

No.	Parts Name	Material	Specification
1	Body	Ductile Iron	GGG50
2	Sealing Ring	Rubber+Brass	EPDM+Brass
3	End Ring	Ductile Iron	GGG50
4	Bolts	Stainless Steel	ISO898-1:1999
5	Washer	Stainless Steel	
6	Nuts	Stainless Steel	ISO898-2:1992
7	Cap	Plastic	

*Other Fasteners like Zinc Plated or PTFE coated are all available on request.

Dimensions(mm)

Size	Pipe OD	D3	D	b	L1	L	Bolts Qty	DIN EN	Weight
								PN10/PN16	kg
DN50	50	50	165	19	63	115	2XM12	●	3.61
DN50/DN60DN65	63	55	180	19	63	115	2XM12	●	4.29
DN60/DN65	75	66	180	19	63	115	2XM12	●	4.39
DN80	90	84	180	19	63	115	4XM12	●	4.58
DN100	110	105	200	19	63	115	4XM12	●	6.44
DN125	125	135	220	19	63	115	4XM12	●	6.63
DN150	160	154	285	19	63	115	4XM12	●	8.39
DN200	200	210	340	19	63	140	4XM14	●	13.75
DN200	225	210	340	20	88	160	4XM14	●	14.72
DN250	250	260	400	22	88	160	6XM16	●	23.89
DN250	280	275	400	22	88	160	6XM16	●	24.38
DN300	315	302	455	24	88	160	6XM16	●	27.89



Features

- Ductile Iron GGG50 material with FBE coated.
- PN10,PN16 working pressure.
- Equipped with Stainless Steel Bolts, nuts & washers
- EPDM or NBR rubber seals .
- High Tolerance Mechanical Pipe Fittings
- Angular deflection +/- 3°.



**Available
In store Now**

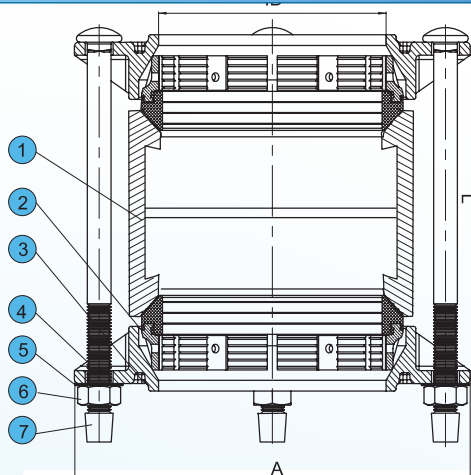
☎ 4783 2411

29 Ayr Dalbeg Road, Ayr

sales@greensgroup.com.au

www.greenswatergroup.com.au

Restrained Coupling for HDPE Pipe & PVC PIPE



Features

- Ductile Iron GGG50 material with FBE coated.
- PN10,PN16 working pressure.
- Equipped with Stainless Steel Bolts, nuts & washers
- EPDM or NBR rubber seals .
- High Tolerance Mechanical Pipe Fittings
- Angular deflection +/- 3°.

Material Specification:

No.	Parts Name	Material	Specification
1	Center Sleeve	Ductile Iron	GGG50
2	Sealing Ring	Rubber+Brass	EPDM+Brass
3	End Ring	Ductile Iron	GGG50
4	Bolts	Stainless Steel	ISO898-1:1999
5	Washer	Stainless Steel	
6	Nuts	Stainless Steel	ISO898-2:1992
7	Cap	Plastic	

*Other Fasteners like Zinc Plated or PTFE coated are all available on request.

Dimensions(mm)

Pipe OD	ID	A	L	Bolts Qty	Weight(kg)
50	55	140	95	2XM12	2.73
63	67	150	95	2XM12	3.41
75	80	150	95	4XM12	4.10
90	95	180	95	4XM12	4.58
110	115	200	95	4XM12	6.34
125	130	240	95	4XM12	7.80
160	165	270	95	4XM14	9.56
200	205	325	110	4XM14	15.11
225	230	325	135	4XM14	19.01
250	255	380	135	6XM16	27.30
280	285	380	135	6XM16	29.25
315	320	420	170	6XM16	43.88



**Available
In store Now**

☎ 4783 2411

29 Ayr Dalbeg Road, Ayr

sales@greensgroup.com.au

www.greenswatergroup.com.au